



Cable ID: FUTP CAT6 23WAG PVC

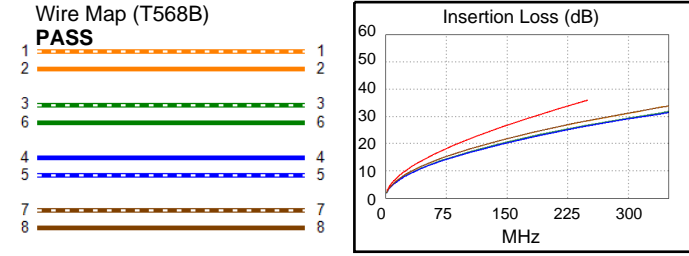
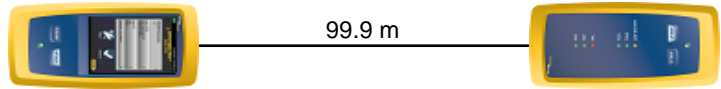
Test Limit: TIA Cat 6 Channel
Limits Version: V7.11
Date / Time: 09/22/2025 03:28:39 PM
Operator: HQY
Headroom 8.4 dB (NEXT 1,2-4,5)
Cable Type: Cat 6 F/UTP
NVP: 69.0%

Main: Versiv
S/N: 21200117
Software Version: V6.13 Build 2
Calibration Date: 02/01/2025
Adapter: DSX-5000 (DSX-CHA004)
S/N: 21252413

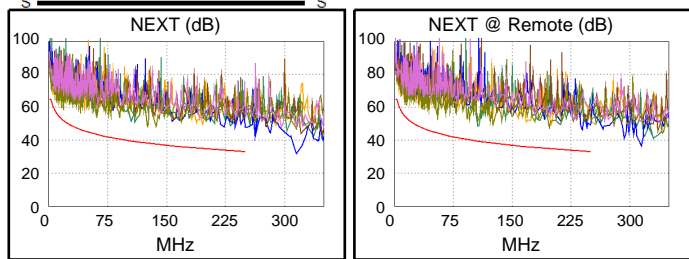
Test Summary: PASS

Remote: Versiv
S/N: 21200257
Software Version: V6.13 Build 2
Calibration Date: 02/01/2025
Adapter: DSX-5000R (DSX-CHA004)
S/N: 21252439

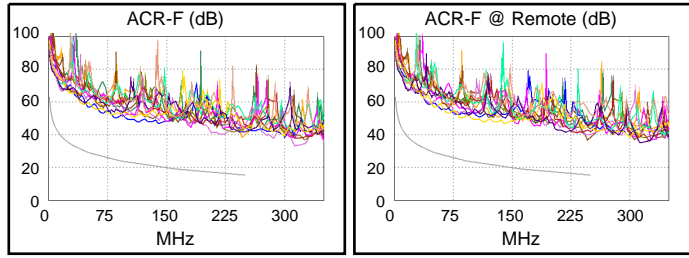
Length (m), Limit 100.0	[Pair 4,5]	99.9
Prop. Delay (ns), Limit 555	[Pair 1,2]	532
Delay Skew (ns), Limit 50	[Pair 1,2]	49
Resistance (ohms)	[Pair 7,8]	14.82
Insertion Loss Margin (dB)	[Pair 1,2]	7.5
Frequency (MHz)	[Pair 1,2]	250.0
Limit (dB)	[Pair 1,2]	35.9



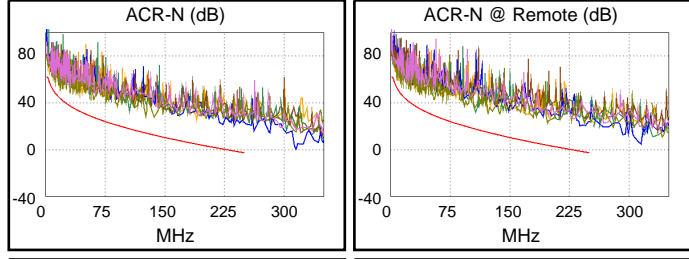
	Worst Case Margin		Worst Case Value	
PASS	MAIN	SR	MAIN	SR
Worst Pair	3,6-7,8	1,2-4,5	1,2-7,8	1,2-7,8
NEXT (dB)	8.9	8.4	14.0	13.0
Freq. (MHz)	8.0	108.5	222.5	239.5
Limit (dB)	58.2	39.3	34.0	33.4
Worst Pair	3,6	3,6	1,2	1,2
PS NEXT (dB)	9.3	10.1	15.2	15.3
Freq. (MHz)	8.0	7.5	232.5	245.5
Limit (dB)	55.6	56.1	30.7	30.3



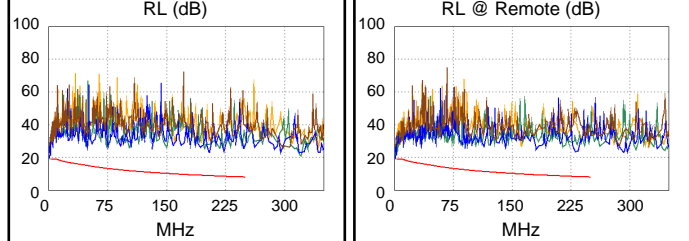
PASS	MAIN	SR	MAIN	SR
Worst Pair	1,2-3,6	3,6-1,2	1,2-3,6	3,6-1,2
ACR-F (dB)	23.0	21.4	23.0	21.4
Freq. (MHz)	246.5	246.5	246.5	246.5
Limit (dB)	15.4	15.4	15.4	15.4
Worst Pair	3,6	1,2	3,6	1,2
PS ACR-F (dB)	24.0	23.5	24.0	23.5
Freq. (MHz)	246.5	246.5	246.5	246.5
Limit (dB)	12.4	12.4	12.4	12.4



N/A	MAIN	SR	MAIN	SR
Worst Pair	3,6-7,8	3,6-7,8	1,2-7,8	1,2-7,8
ACR-N (dB)	9.7	10.6	22.6	20.3
Freq. (MHz)	8.0	13.5	250.0	239.5
Limit (dB)	52.5	47.1	-2.8	-1.6
Worst Pair	3,6	3,6	1,2	1,2
PS ACR-N (dB)	10.3	11.1	22.1	22.8
Freq. (MHz)	5.9	7.5	232.5	245.5
Limit (dB)	53.0	50.6	-3.7	-5.3



PASS	MAIN	SR	MAIN	SR
Worst Pair	4,5	3,6	4,5	4,5
RL (dB)	8.5	7.6	14.1	14.8
Freq. (MHz)	3.5	3.4	204.5	231.0
Limit (dB)	19.0	19.0	8.9	8.4



Compliant Network Standards:
 10BASE-T 100BASE-TX 100BASE-T4
 1000BASE-T 2.5GBASE-T 5GBASE-T
 ATM-25 ATM-51 ATM-155
 100VG-AnyLan TR-4 TR-16 Active
 TR-16 Passive